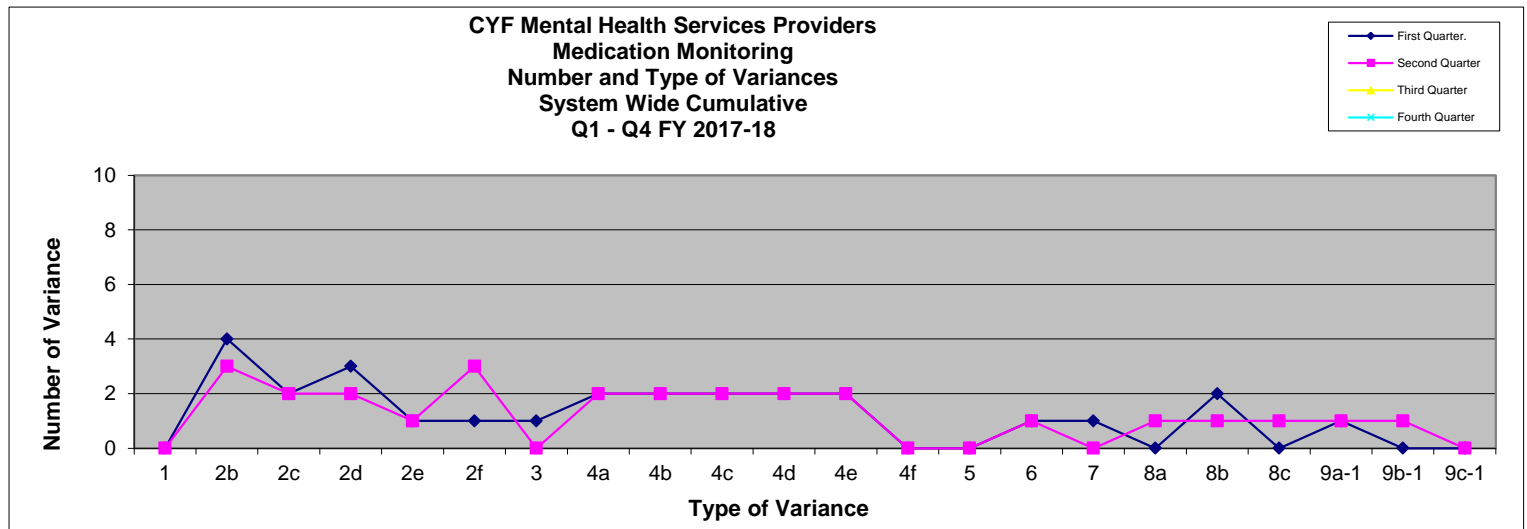
 Summary 2nd Quarter FY 2017-18 Medication Monitoring Report Children, Youth and Family System of Care		
<p>Of the 64 programs that report on Medication Monitoring, 100% submitted a report.</p> <p>A total of 1,283 charts were reported open to meds in the quarter.</p> <p>A total of 72 charts were reviewed (6% of open charts).</p> <p>13 providers reported no medication distribution during this quarter.</p> <p>A total of 27 variances were reported (2% of possible variances in reviewed charts).</p>		
The variances break out as follows (the number to the right represents programs who answered no and thus had a variance):		
1	Medication rationale and dosage is consistent with the community standards.	0
2a	Were labs indicated? NOTE: A "NO" answer to this question is not considered a variance. If this question is answered with "NO", the rest of the questions under 2 (b - f) should be NA	
2b	Were lab results obtained?	3
2c	Were labs reviewed by Medical Staff?	2
2d	Were lab results present in the chart?	2
2e	Were attempts made to obtain appropriate labs?	1
2f	If treatment continues without labs, is there appropriate rationale to continue or discontinue meds?	3
3	Physical health conditions and treatment are considered when prescribing psychiatric medication.	0
4a	No more than 1 of each class concurrently without a clearly documented justification - Stimulants	2
4b	No more than 1 of each class concurrently without a clearly documented justification - Mood Stabilizers	2
4c	No more than 1 of each class concurrently without a clearly documented justification - Antidepressants	2
4d	No more than 1 of each class concurrently without a clearly documented justification - Antipsychotics	2
4e	No more than 1 of each class concurrently without a clearly documented justification - Antiparkinsonian	2
4f	No more than 1 of each class concurrently without a clearly documented justification - Hypnotics	0
5	Were Adverse Drug Reactions and/or Side Effects treated and managed effectively?	0
6	Was informed consent obtained, as evidenced by a signed consent form or ex-parte order?	1
7	Was the diagnosis in concordance with prescribed medication?	0
8a	Did treating M.D. document client's response to medication therapy?	1
8b	Did treating M.D. document the presence/absence of side effects?	1
8c	Did treating M.D. document the extent of client's compliance with the prescribed medication regime and relevant interventions?	1
9a-1	Age 12 – 17 - Less than 4 psychotropic medications (allows no more than 3) - Does the number of medications prescribed meet the standards?	1
9b-1	Age 6 – 11 – Less than 3 psychotropic medications (allows no more than 2) - Does the number of medications prescribed meet the standards?	1
9c-1	Age 0 – 5 - Less than 2 psychotropic medications (allows 1) - CA Guidelines allows for stimulant, Atomoxetine, Guanfacine, Clonidine or Risperidone (Risperidone for Autistic Spectrum disorders and associated aggression only). Does the prescribing meet the Guideline recommendation?	0
9c-2	Does the number of medications prescribed meet the standards?	0



Type of Variance	1	2b	2c	2d	2e	2f	3	4a	4b	4c	4d	4e	4f	5	6	7	8a	8b	8c	9a-1	9b-1	9c-1	9c-2	Total Variance	Total Chart
First Quarter.	0	4	2	3	1	1	1	2	2	2	2	2	0	0	1	1	0	2	0	1	0	0	0	27	71
Second Quarter	0	3	2	2	1	3	0	2	2	2	2	2	0	0	1	0	1	1	1	1	1	0	0	27	72
Third Quarter																									
Fourth Quarter																									
Totals	0	3	4	5	2	4	1	4	4	4	4	4	0	0	2	1	1	3	1	2	1	0	0	54	143

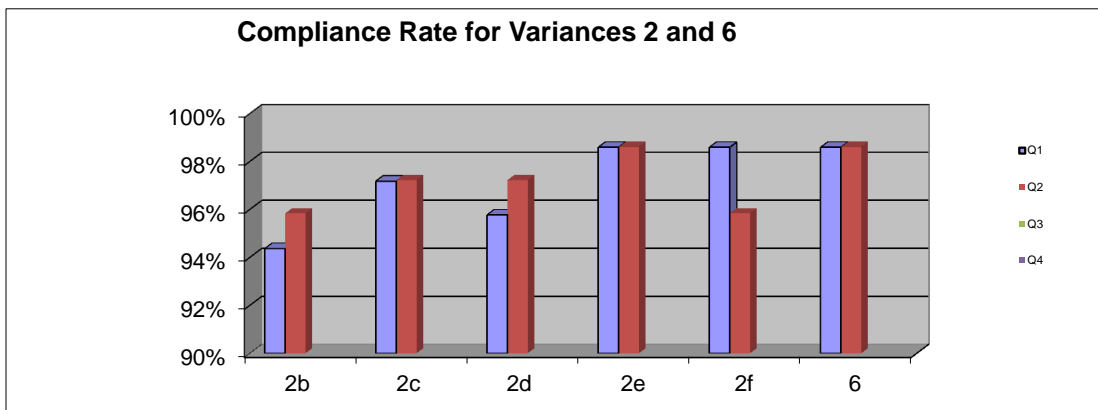
ANCE QUESTION

1. Medication rationale and dosage is consistent with the community standards.
- 2a. Were labs indicated? (a no answer does not constitute a variance)
- 2b. Were lab results obtained?
- 2c. Were labs reviewed by Medical Staff?
- 2d. Were lab results present in the chart?
- 2e. Were attempts made to obtain appropriate labs?
- 2f. If treatment continues without labs, is there appropriate rationale to continue or discontinue meds?
3. Physical health conditions and treatment are considered when prescribing psychiatric medication.
- 4a. No more than 1 of each class concurrently without a clearly documented justification - Stimulants
- 4b. No more than 1 of each class concurrently without a clearly documented justification - Mood Stabilizers
- 4c. No more than 1 of each class concurrently without a clearly documented justification - Antidepressants
- 4d. No more than 1 of each class concurrently without a clearly documented justification - Antipsychotics
- 4e. No more than 1 of each class concurrently without a clearly documented justification - Antiparkinsonian
- 4f. No more than 1 of each class concurrently without a clearly documented justification - Hypnotics (including Trazodone, Diphenhydramine, Zolpidem, Melatonin, Benzodiazepines. Not including Clonidine, Guanfacine & Prazosin)
5. Were Adverse Drug Reactions and/or Side Effects treated and managed effectively?
6. Was informed consent obtained, as evidenced by a signed consent form or ex-parte order?
7. Was the diagnosis in concordance with prescribed medication?
- 8a. Did treating M.D. document client's response to medication therapy?
- 8b. Did treating M.D. document the presence/absence of side effects?
- 8c. Did treating M.D. document the extent of client's compliance with the prescribed medication regime and relevant interventions?
- 8d. Did treating M.D. document measures taken to educate client/parent in regard to medication management?
- 9a-1. Age 12 – 17 - Less than 4 psychotropic medications (allows no more than 3) - Does the number of medications prescribed meet the standards?
- 9b-1. Age 6 – 11 – Less than 3 psychotropic medications (allows no more than 2) - Does the number of medications prescribed meet the standards?
- 9c-1. Age 0 – 5 - Less than 2 psychotropic medications (allows 1). - Guidelines allow for stimulant, Atomoxetine, Guanfacine, Clonidine or Risperidone (Risperidone for Autistic Spectrum disorders and associated
- 9c-2. Age 0 – 5 - Less than 2 psychotropic medications (allows 1). - Does the number of medications prescribed meet the standards?

**CYF MENTAL HEALTH SERVICES PROVIDER
MEDICATION MONITORING**

Compliance Analysis - Variances 2 (Labs) and 6 (Informed Consent)

	Charts Reviewed	# Variances						Compliance Rate					
		2b	2c	2d	2e	2f	6	2b	2c	2d	2e	2f	6
1st Quarter	71	4	2	3	1	1	1	94%	97%	96%	99%	99%	99%
2nd Quarter	72	3	2	2	1	3	1	96%	97%	97%	99%	96%	99%
3rd Quarter													
4th Quarter													



2a. Were Labs indicated? NOTE: A negative response to this question is not considered a variance.

2b. Were lab results obtained

2c. Were labs reviewed by Medical Staff

2d. Were lab results present in chart

2e. Were attempts made to obtain appropriate labs

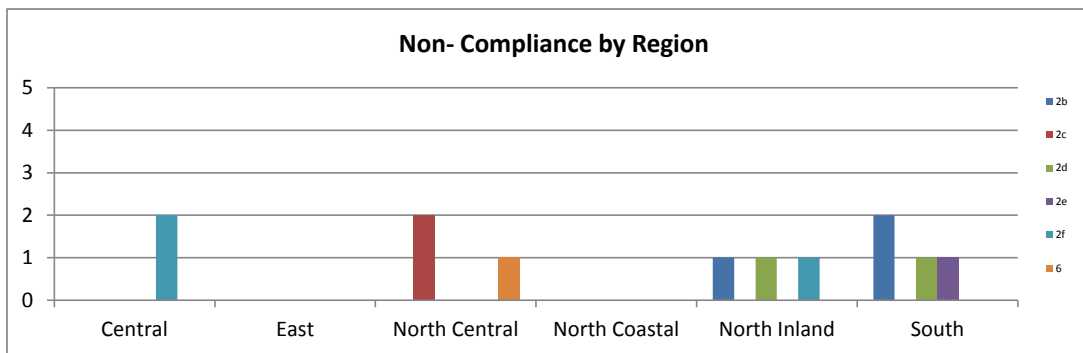
2f. If treatment continues without labs, is there appropriate rationale to continue or discontinue meds

6. Informed consent is evidenced by a signed consent form

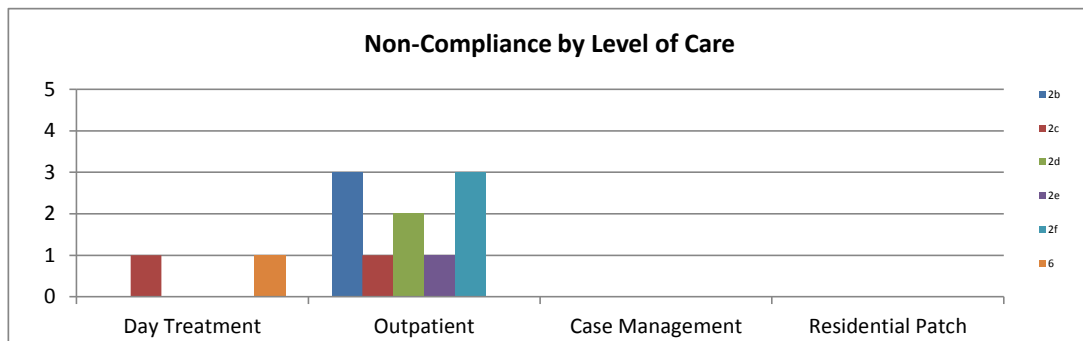
**CYF MENTAL HEALTH SERVICES PROVIDERS
MEDICATION MONITORING**

Compliance Analysis (Variance 2 - Labs and Variance 6 - Informed Consent)

By Region						
	2b	2c	2d	2e	2f	6
Central	0	0	0	0	2	0
East	0	0	0	0	0	0
North Central	0	2	0	0	0	1
North Coastal	0	0	0	0	0	0
North Inland	1	0	1	0	1	0
South	2	0	1	1	0	0
Total - Variance 2	11					
				Total - Variance 6	1	



By Level of Care						
	2b	2c	2d	2e	2f	6
Day Treatment	0	1	0	0	0	1
Outpatient	3	1	2	1	3	0
Case Management	0	0	0	0	0	0
Residential Patch	0	0	0	0	0	0
Total - Variance 2	11					
				Total - Variance 6	1	



Note: The numbers reported here represent the instances of non-compliance as reported by the providers.